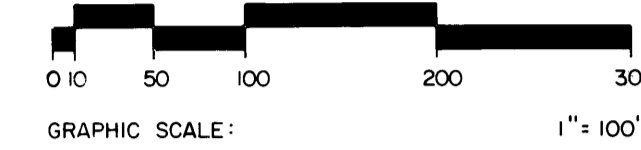
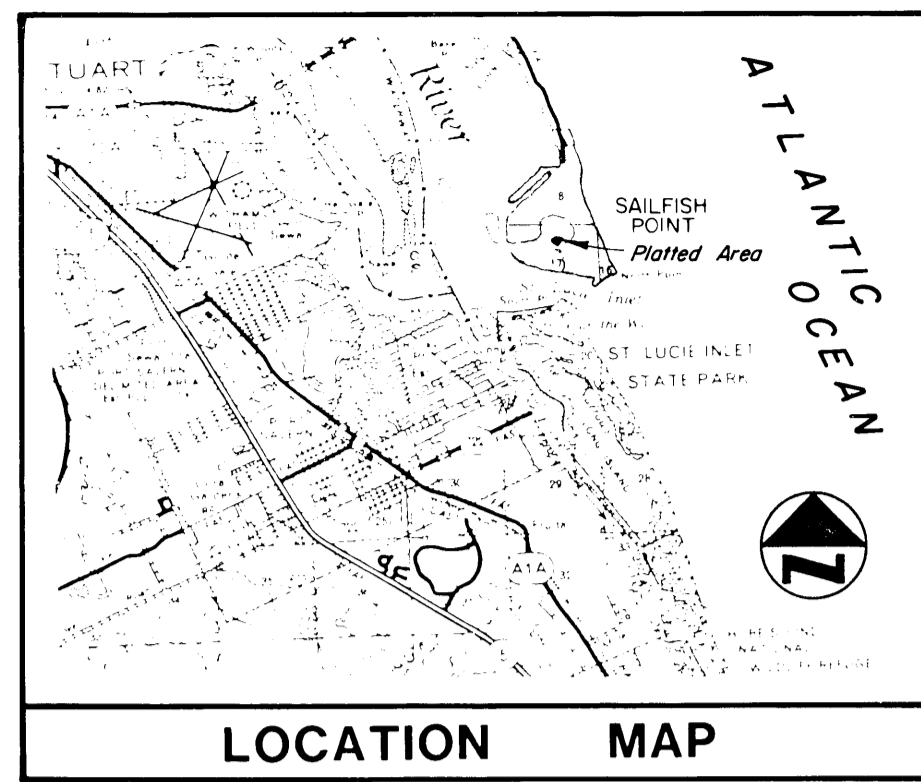


PLAT NO. 9 SAILFISH POINT P.U.D.

LYING IN FRACTIONAL SECTION 17, TOWNSHIP 38 SOUTH, RANGE 42 EAST, MARTIN COUNTY, FLORIDA

JANUARY 1983



I, Louise V. Isaacs, Clerk of the Circuit Court of Martin County, Florida, hereby certify that this plat was filed for record in Plat Book 9, Page 28, Martin County, Florida, Public Records, this day of _____, 1983.

Louise V. Isaacs, Clerk Circuit Court Martin County, Florida

By: _____ Deputy Clerk

File No. _____

(Circuit Court Seal)

HARBOR PLAT NO. 5 SAILFISH POINT P.U.D. PLAT BOOK 8, PAGE 89

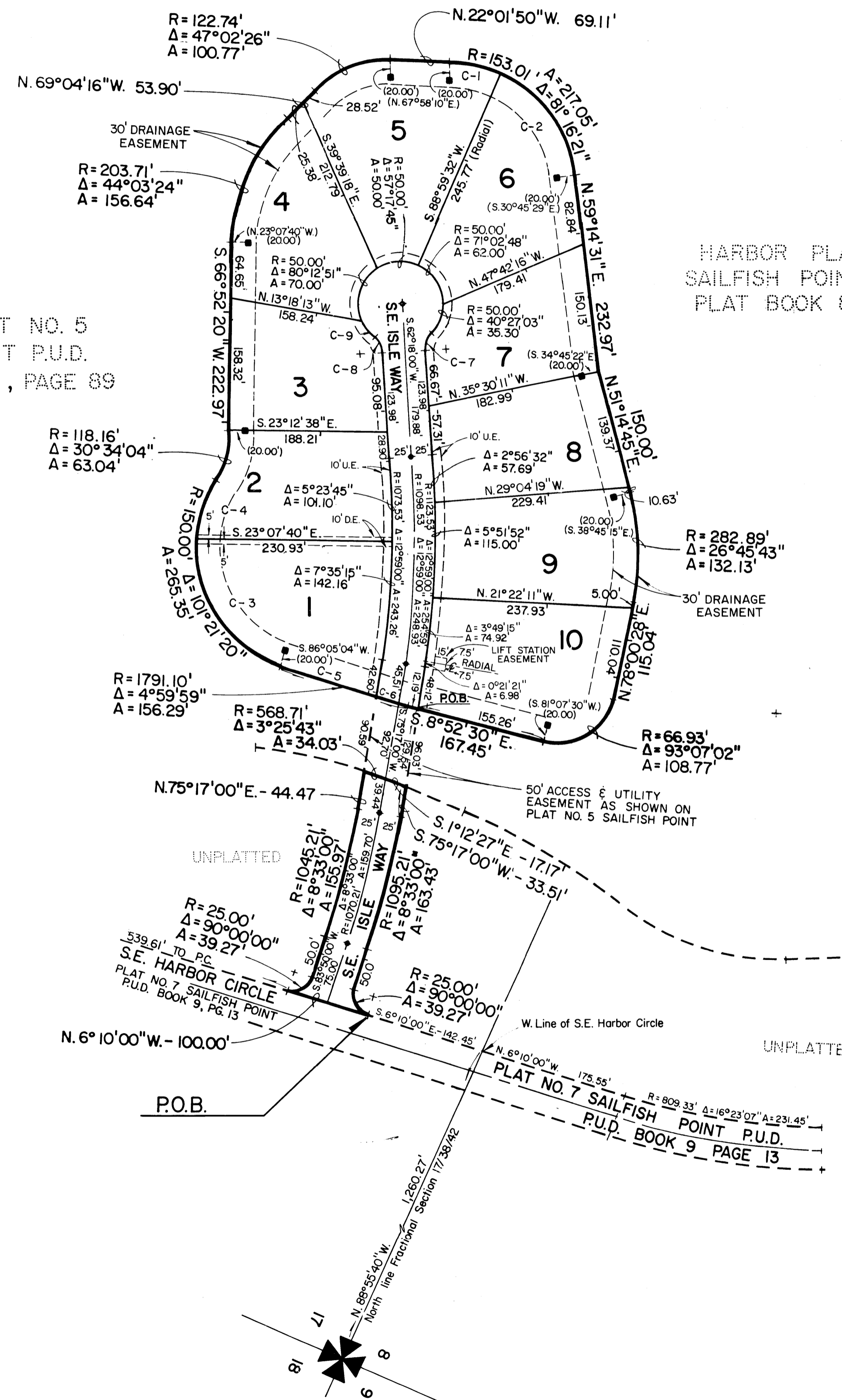
HARBOR PLAT NO. 5 SAILFISH POINT P.U.D. PLAT BOOK 8, PAGE 89

Curve Table

Radius	Delta	Arc
C-1 153.01'	22°22'33"	59.76'
C-2 153.01'	58°53'48"	157.29'
C-3 150.00'	73°23'52"	192.16'
C-4 150.00'	27°57'28"	73.19'
C-5 1791.10'	3°46'50"	118.18'
C-6 1791.10'	1°13'09"	38.11'
C-7 25.00'	48°11'23"	21.03'
C-8 25.00'	48°11'23"	21.03'
C-9 50.00'	27°22'19"	23.89'

The following Building Setback lines shall apply to all lots platted hereon

1. Front setback = 25' from right of way line
2. Side setback = 15' from property line
3. Rear setback from Harbor = 50' from property line



BEARING BASE
All Bearings shown hereon are Relative to the bearings shown on Plat No. 7 Sailfish Point P.U.D. Book 9, Page 13

- = P.C.P. (Permanent Control Point)
- = P.R.M. (Permanent Reference Monument)
- DE. = Drainage Easement
- UE. = Utility Easement